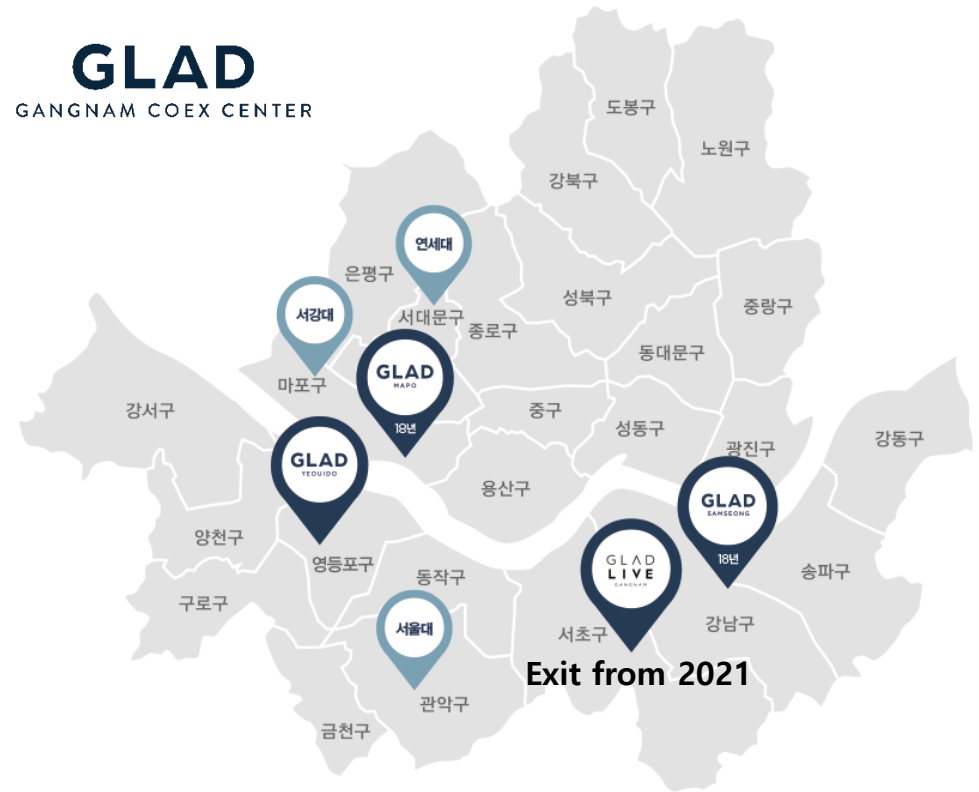


**GLAD**

GANGNAM COEX CENTER



**35 mins** from GIMPO International Airport & **60 mins** from ICN Airport

## GLAD GANGNAM COEX CENTER

## ROOMS







## Urban stay for the smart travelers

GLAD GANGNAM COEX CENTER serves for smart travelers. To change the image of existing business hotels featuring a plain and dry atmosphere, it reflects the hotel's unique intimacy in the design and service.

## Ideal location for business people

GLAD GANGNAM COEX CENTER is located in Gangnam, a special tourist zone of MICE in Seoul where is the major metropolis in Northeast Asia. Above all, Coex hosts more than 200 exhibitions and over 2,500 international conferences and events annually. In addition, business people have easy access to anywhere they need to go on foot within 10 minutes. Furthermore, an ideal location adjacent to city airport and major terminals helps travelers save time and energy.

(Total number of rooms: 282 rooms)

Room Type	Size (m <sup>2</sup> )	Number of Room	Bed Type
Standard Double	20.4	144	Queen 
Standard Twin	20.4	103	Superior Single x 2 
Superior Double	21.4	21	Queen 
Jumbo Twin	25.4	14	Queen x Super Single 



## 층별 정보 FLOOR INFORMATION

## VINUM WINESTORE

독창적이면서 효율적인 공간 설계, 집에 머무르는 듯 아늑한 스튜디오형 객실, 경쾌한 위트와 따뜻한 질감이 느껴지는 건축과 인테리어 디자인, 있어야 할 것은 충실히 갖추고, 없어도 될 것은 과감하게 간소화한 편의 시설과 서비스, 이 모든 것을 관통하는 글래드 호텔의 핵심 가치는 '실용주의'입니다. 필요 이상으로 고급화되고 획일화된 고급 호텔과 기능 이상의 디자인을 과시하는 부티크 호텔, 무미 건조한 비즈니스 호텔을 뛰어넘어 글래드 호텔은 새로운 범주의 라이프 스타일 호텔을 제시합니다.

글래드 강남 코엑스센터에는 모든 서비스를 담당하는 프런트 데스크, 와인 O2O 서비스 플래그십 스토어 '비눔 와인스토어', 비즈니스 라운지가 L층(1층)에 위치하고 있습니다.

지하 1층에는 블랙바스테이크하우스, 지하 2층에는 갓포 아키(일식당), GYM, 코인 세탁실이 위치합니다. 다양한 타입의 객실은 2층부터 22층에 걸쳐 위치하고 있습니다.

Lifestyle curator, GLAD hotel is a brand with unique and functional interiors, witty yet friendly design. We are not a drab cookie cutter business hotel, but a place that makes you feel like home. With warm greetings, witty but refined services will always make your stay comfortable.

On the 1st Floor (Lobby Floor), there are front desk, the VINUM WINESTORE and business lounge.

BLACKBAR STEAKHOUSE is on B1, KAPPO AKII(Japanese Restaurant), GYM and Coin Laundry are on B2. All rooms from the 2nd floor to the 22nd floor.

2층 - 22층 2 - 22 Floor	객실 ROOMS
1층 Lobby Floor	프런트 데스크 FRONT DESK  비눔와인스토어 VINUM WINESTORE  비즈니스 라운지 BUSINESS LOUNGE
지하 1층 B1 Floor	블랙바 스테이크하우스 BLACKBAR STEAKHOUSE
지하 2층 B2 Floor	갓포아키(일식당) KAPPO AKII(Japanese Restaurant)  체력단련실 GYM  코인세탁실 COIN LAUNDRY

## 와인그래프가 운영하는 O2O 플래그십 와인스토어

비눔은 국내 최대 와인 검색/추천 플랫폼 와인그래프가 직접 기획하고 운영하는 O2O 서비스 플래그십 스토어입니다. 프랑스어 와인(Vin)과 한국어 움(Um)의 합성어이자 와인의 라틴어 어원이기도 한 Vinum은 와인그래프가 지향하는 군더더기 없고 경제적인 와인 공간을 의미합니다. 사용자들이 와인을 통한 연결을 주도하며 쉽고 즐겁게 와인을 발견-선택-경험-공유하도록 도와주는 와인그래프의 서비스 컨텍스트를 제대로된 구매 경험으로 연결하는 오프라인 공간으로 고객 여러분께 새로운 경험과 즐거움을 제공해 드리게 될 것입니다.

## O2O Wine Store operated by Winegraph

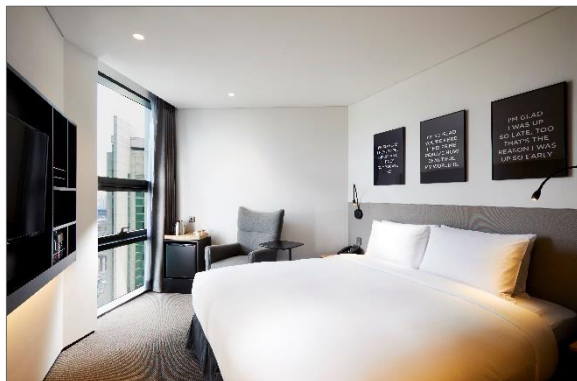
VINUM is a flagship O2O wine store operated by Winegraph, Korea's largest online-based wine commerce platform. VINUM, a combined word with Vin(French) and Um(Korean, dug-out hut), refers to affordable wine space that Winegraph aims for. VINUM is an off-line space that connects the context of the Winegraph service, which helps users find, select, experience and share wines easily and enjoyably.

영업 시간 Operation Hours	월-토(MON-SAT) 11:00 - 20:00 일요일 휴무(Closed on Sunday)
--------------------------	--

위치 Location	1층 1F(Lobby Floor)
----------------	-----------------------

1

**STANDARD DOUBLE (21.4m<sup>2</sup>)**



2

**STANDARD TWIN (21.4m<sup>2</sup>)**



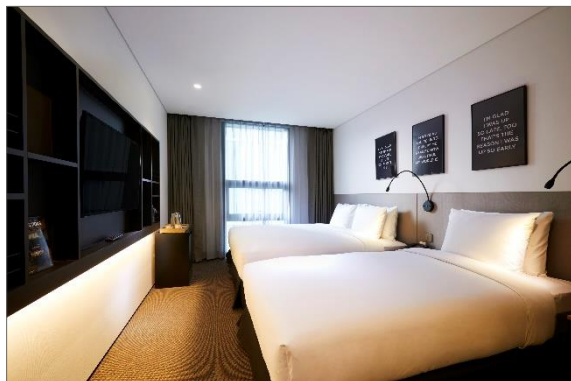
3

**SUPERIOR DOUBLE (23.1m<sup>2</sup>)**



4

**JUMBO TWIN (24.8m<sup>2</sup>)**



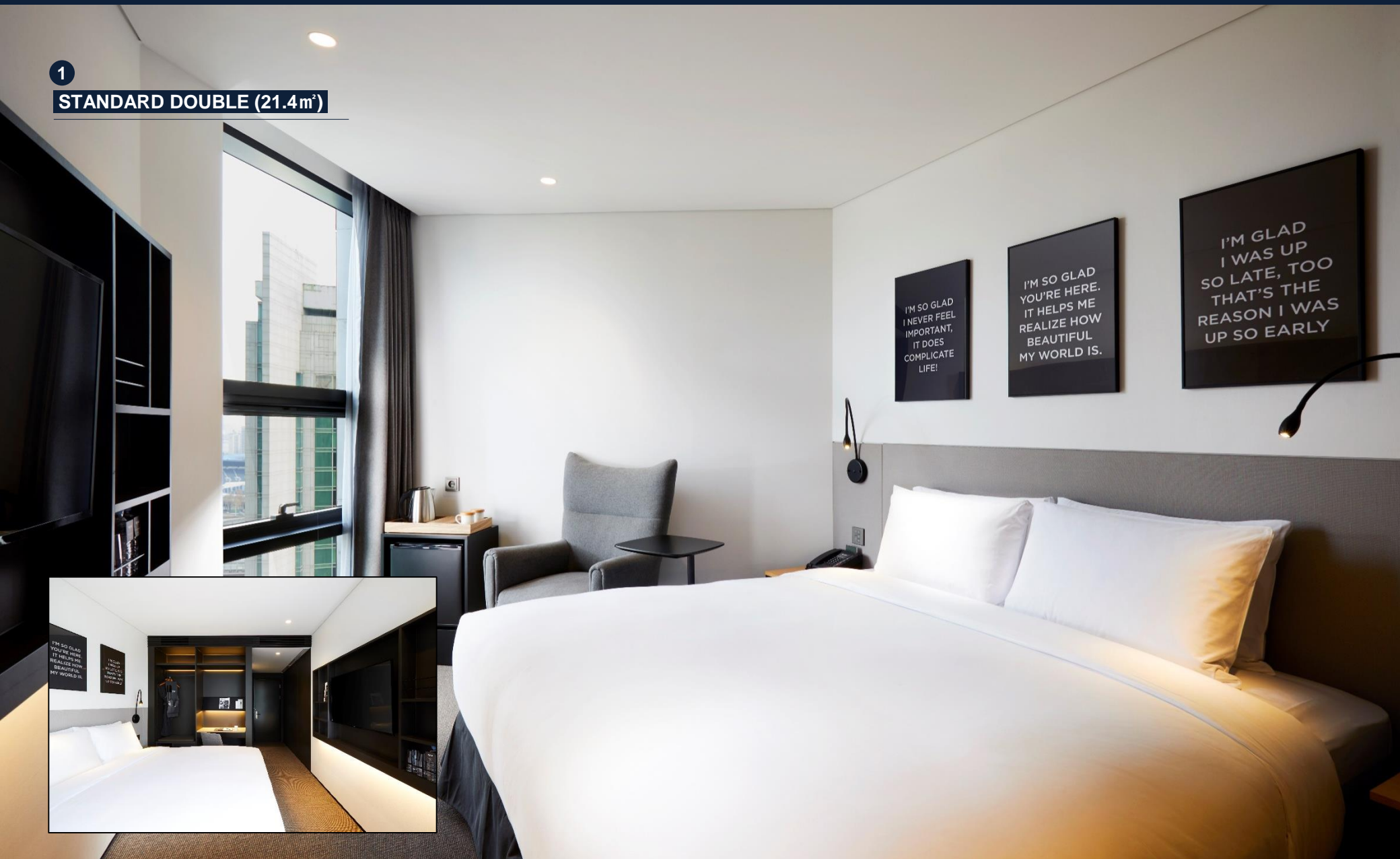
**GLAD**  
GANGNAM COEX CENTER

**4 Room Types**

**282 Rooms**

Bedding Choice by GLAD Hotels

1

**STANDARD DOUBLE (21.4m<sup>2</sup>)**



2

STANDARD TWIN (21.4m<sup>2</sup>)

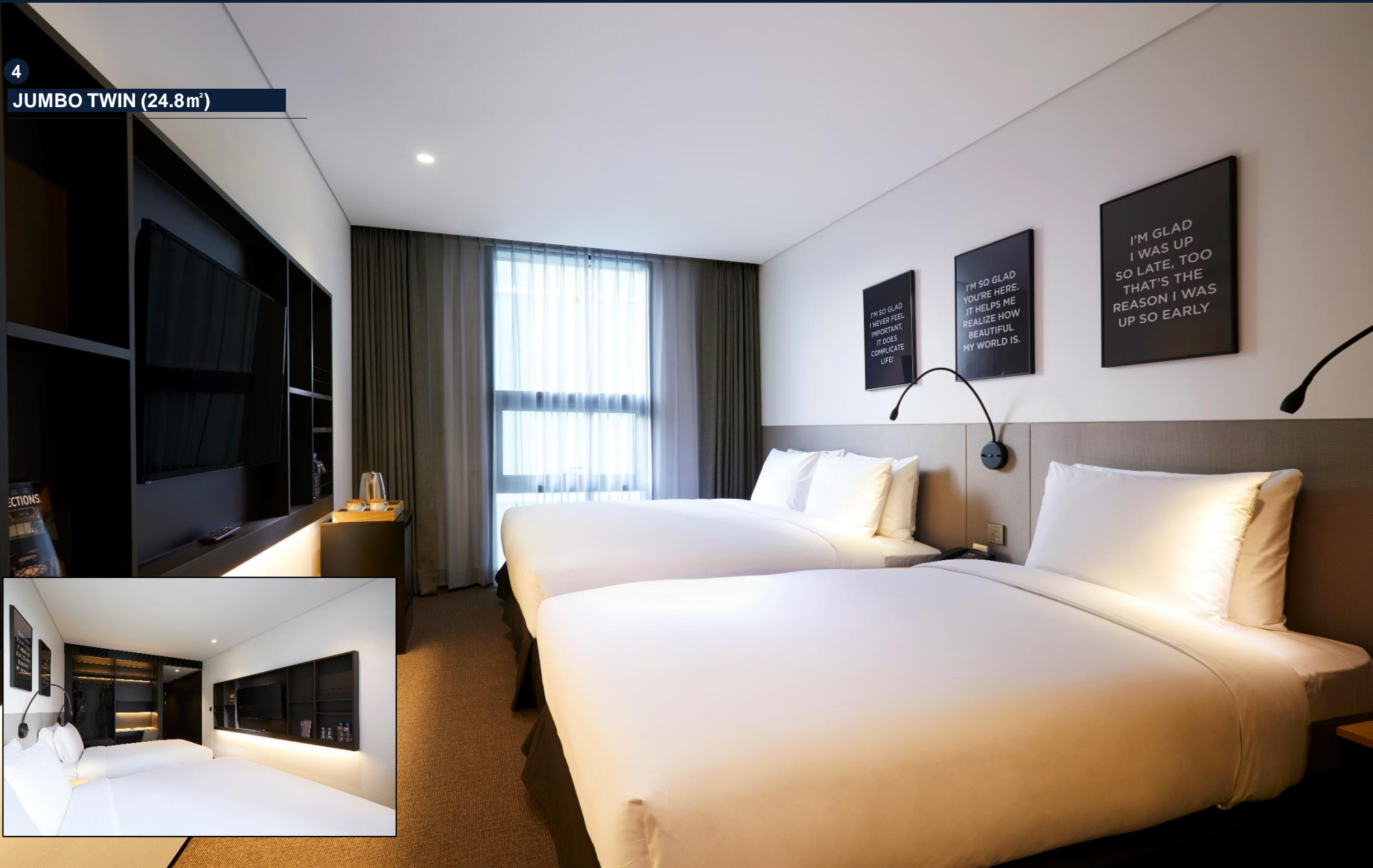
3

**SUPERIOR DOUBLE (23.1 m<sup>2</sup>)**



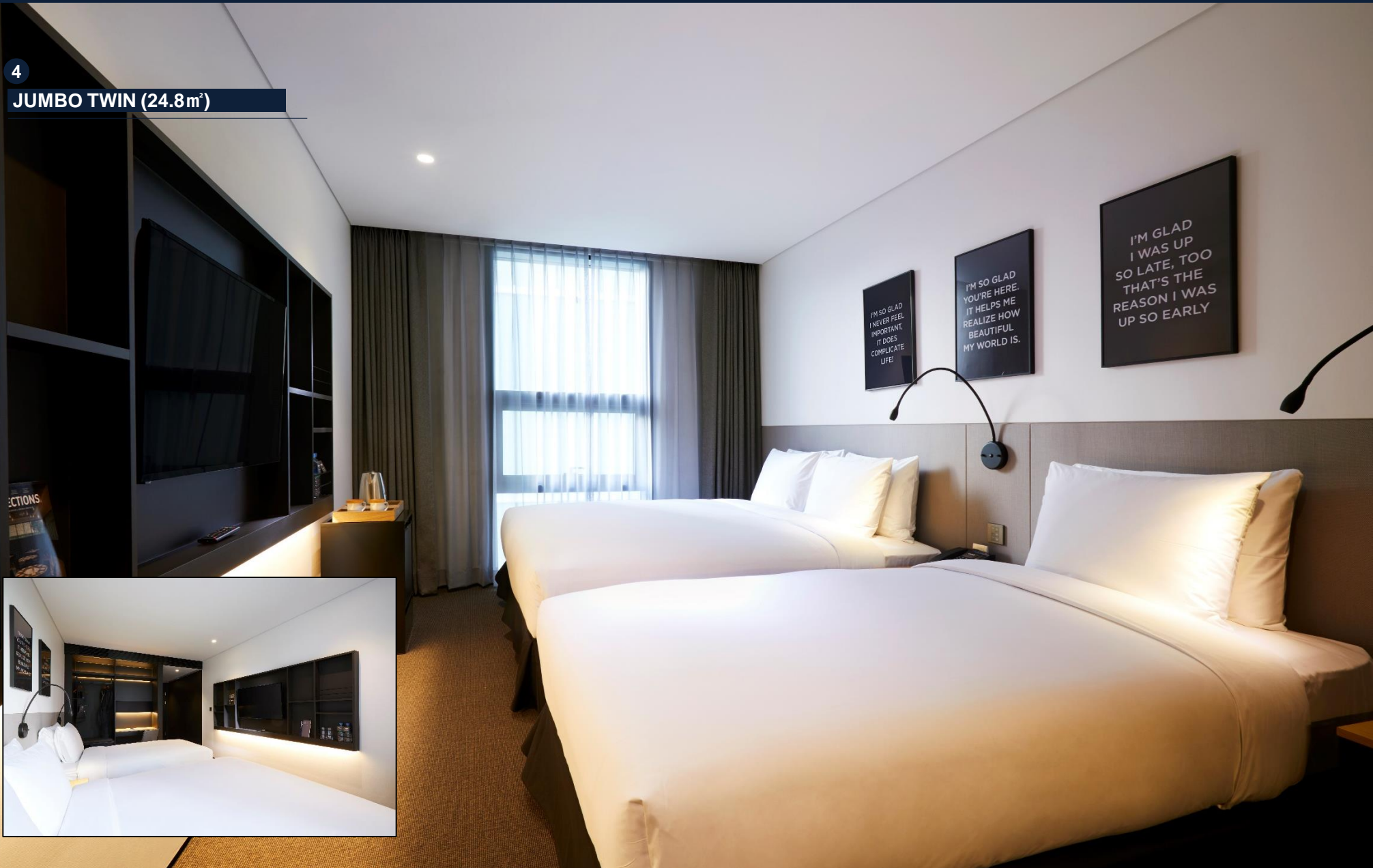
4

JUMBO TWIN (24.8m<sup>2</sup>)

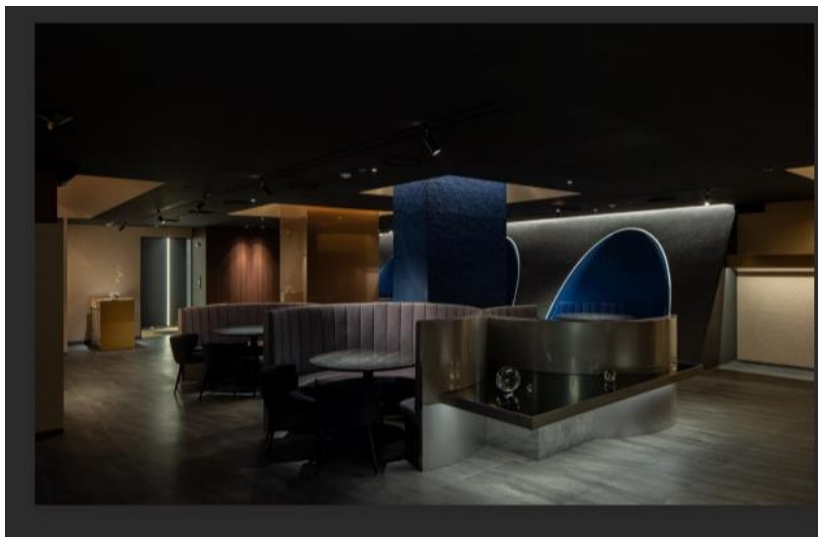


4

JUMBO TWIN (24.8m<sup>2</sup>)







## KAPPO AKII

### 고품격 갓포요리 전문점, 갓포아키 삼성점

갓포아키는 최고급 재료가 가진 본연의 맛을 선보이는 갓포 요리 전문점입니다. 모던함과 세련됨을 동시에 갖춘 프라이빗한 공간 구성으로 격식있는 비즈니스와 친목 모임의 최적의 장소입니다. 글래드 강남 코엑스 센터의 갓포아키는 고품질의 음식과 최상의 서비스를 제공합니다.

### Luxury Kappo Restaurant, KAPPO AKII

KAPPO AKII is a Japanese kappo restaurant which is specialized in extracting original tastes of premium ingredient. It is an idle venue for executive business meetings and social gatherings with its modern, re-fined and private space. KAPPO AKII in GLAD Gangnam Coex Center offers premium cuisines and best services to our customers.

영업 시간 Operation Hours	18:00 - 01:00 일요일 휴무(Closed on Sunday)
위치 Location	지하 2층 B2
좌석 Seat	94



## BLACKBAR STEAKHOUSE

다양한 주류와 고 퀄리티 음식을 동시에 즐길 수 있는 혁신적인 공간.

2016년, 국내 최초 화이트 스피릿 전문 바인 화이트바 (White Bar - Urban Stylish)를 청담동에 오픈. 2018년, 영화 킹스맨을 모티브로 한 다양한 싱글몰트 스카치 위스키와 칵테일 전문 바인 블랙바 (Black Bar - Island Stylish)를 글래드 여의도 호텔에 오픈했습니다. 그리고 2021년 글래드 강남 코엑스센터에 블랙바 스테이크 하우스가 오픈합니다. 블랙 컬러에 영감을 받아 최상급 CAB등급의 블랙 앵거스를 부위별 다양한 방식으로 숙성한 스테이크와 다양한 몰트 위스키, 와인, 칵테일과 음식의 조화는 고객 여러분께 새로운 경험을 제공할 것입니다.

영업 시간 Operation Hours	디너(Dinner) 18:00 - 21:30 바(Bar) 22:00 - 02:00 일요일 휴무(Closed on Sunday)
-----------------------------	--

위치 Location	지하 1층 B1
----------------	-------------

좌석 Seat	46
------------	----

An innovative and luxurious steakhouse where you can enjoy high-quality food and drinks at the same time.

In 2016, the "WHITE BAR", Korea's first white-spirits-specialized bar has opened in Cheongdam-dong. And in 2018, the "BLACK BAR", an Irish style bar which is motivated from the movie 'Kingsman', and specialized in various single malt scotch whiskies and cocktails, has opened in GLAD Yeouido Hotel. Now, in 2021, we welcome you to our new "BLACKBAR STEAKHOUSE" where you can enjoy premium angus beef steaks and unique concept of Black Bar at the same time.





체력단련장 GYM



비즈니스 라운지 BUSINESS LOUNGE



COIN LAUNDRY

체계적인 체력관리를 통해 삶의 에너지를 충전할 수 있는 공간  
체계적인 체력 관리를 통해 삶의 에너지를 재충전할 수 있는 최적의 공간입니다. 바쁜 일상에서 느낀 피로에서 벗어나 운동을 할 수 있는 GYM은 투숙 시 무료로 이용 가능합니다.

운영 시간  
Operation Hours 24시간  
24 Hours

위치  
Location 지하 2층  
B2

안락한 분위기의 인테리어와 디지털 업무 지원 시설을 갖춘 라운지 공간  
안락한 분위기의 인테리어와 디지털 업무 지원 시설을 갖춘 라운지 공간입니다. 투숙객들이 24시간 무료로 자유롭게 이용 가능한 클레드 호텔의 업무 지원 시설로, PC와 인터넷 등 최고급 사양의 비즈니스 시스템을 갖추고 있습니다. (일부 서비스 이용 시 추가 요금이 발생합니다.)

영업시간  
Operation Hours 24시간  
24 Hours

위치  
Location 1층  
1F(Lobby Floor)

Lounge area with comfortable atmosphere and digital facilities

The lounge welcomes business guest for 24 hours. There are high-end digital devices, WIFI, scanners and laser printers. (\*Extra charges to some services)

## 이용안내

- 체력장 내에서는 반드시 운동복 및 운동화를 착용해야 합니다.
- 체력장 내에서의 고성방가는 금지되어 있습니다.
- 체력장 내에서는 금연입니다.
- 사용하신 린넨류는 지정된 장소에 넣어 주시기 바랍니다.
- 타인에게 피해를 끼치는 행동은 삼가 주시기 바랍니다.
- 안전사고에 유의하시기 바랍니다.
- 이용자의 부주의로 발생하는 제반 사고 및 부상은 호텔 에서 책임지지 않습니다.

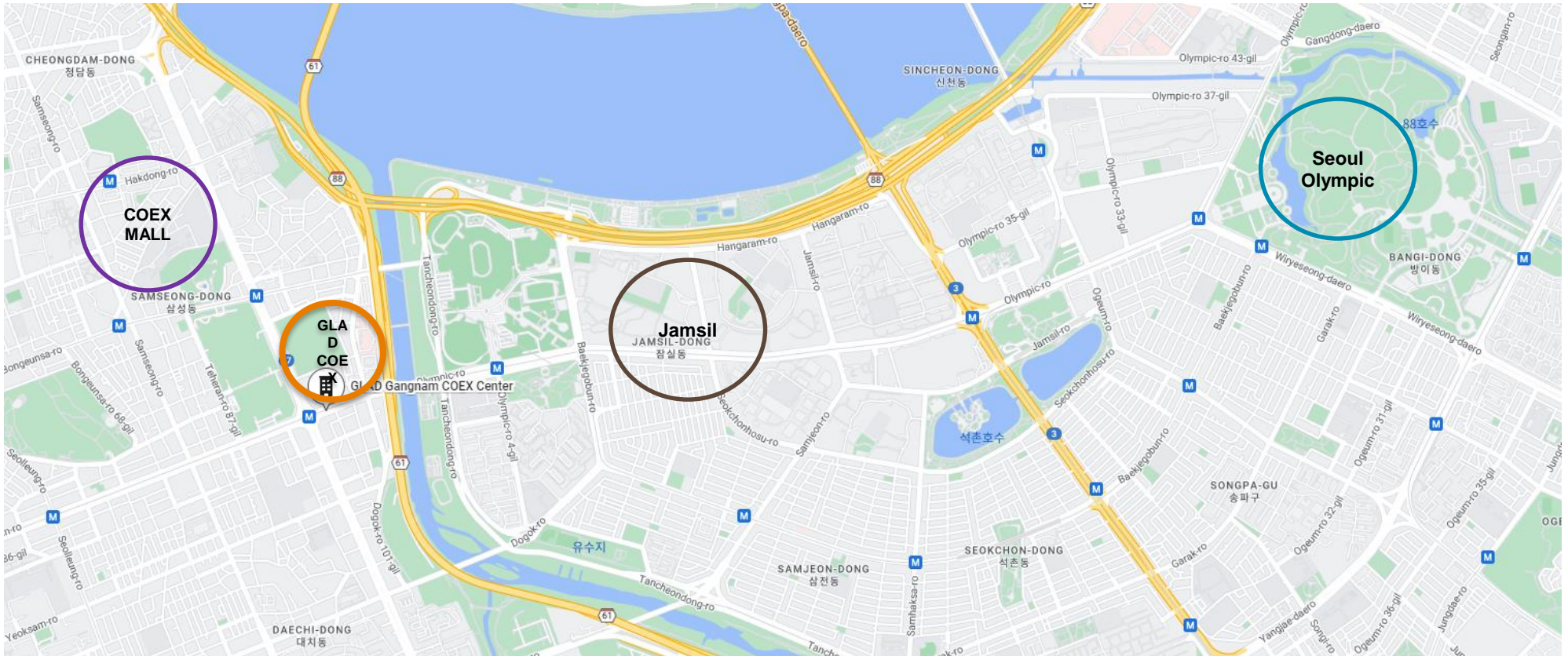
## How to use

- Guests are not allowed to speak loudly or to bother others.
- Guests may not speak loudly or behave in a way that bothers other guests
- No smoking
- Linens must be returned
- Guests should follow staff's instruction to prevent accident.
- Our hotel is not responsible for accidents or injuries caused by the guests' lack of attention.

코인 세탁  
서비스  
Coin  
Laundry  
Service

직접 세탁 진행 시, 지하 2층에서 세탁 및 건조를 각 3,000원, 세제 500원으로 이용 가능하며, 다리가미 또한 사용 가능합니다.  
If you would like to use self-laundry service, please go to B2F.

# Hotel information



## Starfield Coex Mall (Shopping Center)

558m / 10mins by walk

## Jamsil Area

2.5km / 7mins by taxi or car  
15mins by transportation

## Bangidong (Olympic Park)

4.8km / 13mins by taxi or car  
45mins by transportation



# Hotel information

## Jamsil Area



- **Jamsil Baseball Stadium**

A fine example of the infrastructural prowess that Seoul is known for, the Jamsil Sports Complex is a facility managed by the Seoul Sports Facilities Management Office. Located in the Songpa-gu area of the city, this sports facility lies overlooking the Han River and is easily accessible by public transportation. A premier venue for some of the major sporting events in the region, the complex is the home of the massive Olympic Stadium, which boasts a capacity of 100,000! Besides this humongous stadium, the complex also has other venues like another stadium with a capacity of 4000, a baseball field with a capacity of 50,000, a gymnasium that can accommodate 20,000, and two swimming pools. See the website or call to know more.

**Jamsil-dong 10, Seoul, South Korea, 05693**

**+82 2 2240 8802 , +82 2 2240 8825**

**1.6km / 5mins by taxi or car**



- **Lotte World Tower**

Located in the heart of Seoul, the Lotte World Tower stands at a height of 555.7 meters (1823.16 feet). The super-tall skyscraper was opened to the public on April 3, 2017 and is one of the tallest buildings in South Korea and the world. The tower is home to several stores, cafes, restaurants, galleries, an aquarium and even a concert hall. In addition they have a theme park that contains an ice rink and folk museum. On the top floors of the tower they have an observation deck, a sky-walk, and a luxury hotel. The tower is very popular with locals and tourists who spend the entire day exploring and enjoying a plethora of activities under one roof.

**300 Olympic-Ro, Seoul, South Korea, 05551**

**+82 2 3213 5000**

**3.7km / 10mins by taxi or car**



# Hotel information

## Jamsil Area



- **Seokchon Lake**

Constructed on landfill reclaimed from the Han River, this park has lots to offer visitors. It is divided into two sections, east and west, separated by a road which passes through it and surrounded by a lake. Both parts offer exciting things to do. The west side includes Seoul Nori-Madang, an open-air stage, and Magic Island, an amusement park owned and operated by Lotte World. On the east side, you can access the Songpa Ferry, ride on monorail trains, boats and cruisers, and explore a cave. No matter what you decide to do, it will take a whole day to explore everything this park has to offer.

**180 Jamsil-ro, Songpa-gu, Seoul 05617, South Korea, Seoul, South Korea, 05504**

**+82 2 3271 6900**

**3.5km / 10mins by taxi or car**



- **Olympic Park**

Located in the heart of the city, the Olympic Park was built when the Summer Olympics visited Seoul in 1988. It houses tennis courts, weight-lifting and fencing gymnasiums, a gymnastics arena and an indoor swimming pool. With the games done and dusted, these venues now play host to numerous cultural and sporting events, and the park is a popular tourist attraction by itself. Enter through the majestic Peace Gate with the Olympic flame atop, and soak in the freshness of manicured lawns donned with stone and metal sculptures. An inanimate version of Hodori, the games' mascot welcomes you at the Olympic Museum to celebrate the history of the games and witness various exhibitions.

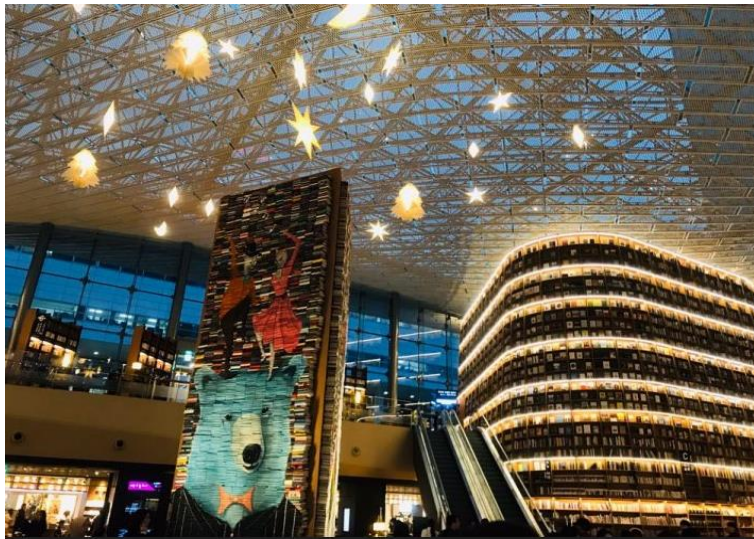
**88 Bangi-dong, Seoul, South Korea, 05540**

**+82 2 300 5514**

**4.8km / 13mins by taxi or car**

# Hotel information

## COEX Mall



- **Coex Mall \_ Shopping Mall & Pyeolmadang Library**

COEX (Convention & Exhibition) is a private company belonging to the Korea Trade Association which operates and manages a comprehensive exhibition facility and a COEX mall. The original name was KOEX, but the name was changed to COEX in 1998. Line 2 Samsung Station and Line 9 Bong Eun Ministries are connected to COEX. The comprehensive exhibition facilities consist of the main building and the annex, and the surrounding area located in such as a foreigner casino, hotel, department store and on the ground is the performance venue 'Coex Atrium'.

"Pyeolmadang Library" is a large library located in "Central Plaza" in "Coex Small." The huge 13-meter-tall bookshelf holds about 50,000 books and is open to anyone during business hours. Some seats come with outlets, so it's convenient to work on a computer or tablet and charge your cell phone while traveling. Byulmadang means "the garden of stars," and you can see the soft lights enveloping the entire library at night. The masterpiece bookshelf offers a good view for taking pictures, as well as seasonal decorations such as a large tree being displayed at Christmas.

**159, Samsung-dong, Gangnam-gu, Seoul, Mall B11F**

**10:00 AM - 10:00 PM**

**Holidays: None**

**Transportation:**

**Directly connected underground from Exit 5 and 6 of Samseong Station on Subway Line 2**

**Exit 7 of Bongeunsa Station on Subway Line 9 is directly connected underground.**

**558m / 10mins by walk**



# Hotel information

## COEX Mall



- **Coex Aquarium**

Over 500 exotic species and 40,000 fascinating marine life call Coex Aquarium their home. The aquarium is divided into six different categories. The Deep Blue Sea, as the name suggests are for underwater creatures from the deep end of the ocean. Seven Seas are reserved for species from the Caribbean, Mediterranean, Red Sea, Pacific Ocean and North and South Poles. Marine Touch allows you to be in touching distance of the enchanting beings, quite literally. Ocean Kingdom comprises of sharks, stingrays, groupers, napoleons and so on. The Inca Empire features relics from the empire of the same name while Amazon World showcases tropical fish from the Amazon forest. Head here for a breath-taking and unforgettable experience.

**513 Yeongdong-daero, COEX Mall, Seoul, South Korea, 06164**

**+82 2 6002 6200**

**10:00 AM - 08:00 PM**

**558m / 10mins by walk**



- **Coex Convention Center**

Originally named KOEX (Korea Convention and Exhibition Center), this building was established in 1979 to accommodate more than 100 separate conventions, exhibitions, conferences and events. In 1988, the name was changed to COEX, Convention and Exhibition Center. Delegates can shop for clothes, visit tailors, dine at various Korean or Western-style restaurants, or simply have a few drinks at one of the bars. There are many different shops to choose from. After shopping, head to Megabox Cinema, which is one of the newest and largest movie theaters in the capital.

**Samseong-dong, Seoul, South Korea, 06164**

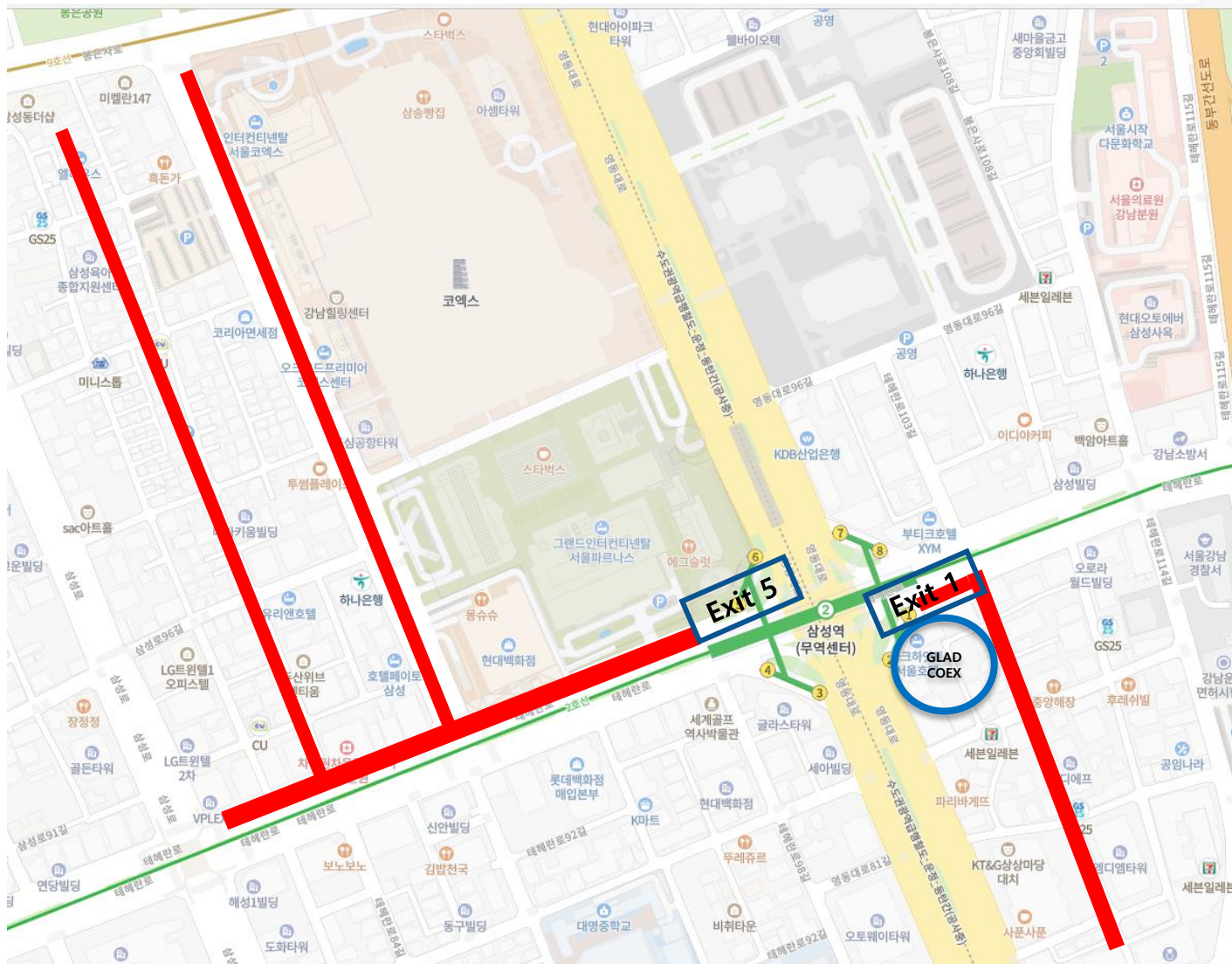
**+82 2 6000 1121**

**10:00 AM - 10:00 PM**

**558m / 10mins by walk**



# Restaurants



## Samsung Station (Exit 1)

**Korean Restaurants: 7**  
**Japanese Restaurants: 1**  
**Asian Restaurants: 2**

**Coffee & Bakery: 8**

**Convenience Store: 5**

## Samsung Station (Exit 5)

**Korean Restaurants: 21**  
**Japanese Restaurants: 3**  
**Italian Restaurants: 3**  
**Asian Restaurants: 4**

**Coffee & Bakery: 7**

**Convenience Store: 7**

# Restaurants

## Samsung Dong



### **Hadonggwan**

**513 Coex Mall B1 J101, Yeongdong Boulevard, Gangnam-gu, Seoul, South Korea**

: Famous restaurant in Seoul as Korean traditional food as Sulengtang (Beef soup with rice)

**- 558m / 10mins by walk**

### **Myeongin Deungsim**

**30 Bongsam-ro, Gangnam-gu, Seoul, Korea 86-gil**

: Koean Barbeque restaurant (Beef Sirloin, Beef Sashimi)

**- 1km / 15mins by walk**



### **Timhohwan (Dimsum)**

**30 Bongsam-ro, Gangnam-gu, Seoul, Korea 86-gil**

: Kinds of Dimsum Taiwan resraurant

**-1km / 15mins by walk**



# Coex Mall



**513 Coex Mall B1, Yeongdong Boulevard, Gangnam-gu,  
Seoul**

**- 558m / 10mins by walk**

**513 Coex Mall B1 , Yeongdong Boulevard, Gangnam-gu,  
Seoul**

**- 558m / 10mins by walk**

**513 Coex Mall B1 , Yeongdong Boulevard, Gangnam-gu,  
Seoul**

**558m / 10mins by walk**



## CONTACT US

### Location information

Teheranro 610, Gangnam-gu, Seoul, South Korea

+82. 2. 6474. 5000

[rsvn.coexcenter@glad-hotels.com](mailto:rsvn.coexcenter@glad-hotels.com)

### Transportation

#### Distance to The GLAD GANGNAM COEX CENTER

69.1km from Incheon International Airport

40km from Gimpo International Airport

#### Taxi

Incheon International Airport to GLAD  
GANGNAM COEX CENTER

fare: about 100,000 won for general taxi  
160,000 won for deluxe taxi

#### Subway

Line 2 Samsung Station Exit 1

#### Airport Limousine

<Incheon Airport>

6103

Fares: Adults 16,000 won / Children: 10,000 won  
Dispatch interval: 10-25 minutes

1. COEX City Airport → Incheon Airport

Hours of Operation: 04: 10 - 21: 30

Boarding location: Get off at T1 3rd floor / T2 3rd  
floor or 1st basement

2. Incheon Airport → COEX City Airport

Hours of Operation: T1 05:55 / T2 05:35 to T1 23:30  
/ T2 22:55

Boarding location: T1 1st floor 7A boarding / T2  
basement 1st floor 21st boarding

6006

Fares: Adult 15,000 won / Child: 10,000

Won Dispatch interval: 15-25 minutes (47 times a  
day)

1. Samseong Station Exit 7 → Incheon Airport

Hours of Operation: 04: 09-20: 39

Boarding location: T1 3rd floor getting off / T2 3rd  
floor getting off

2. Incheon Airport → Samseong Station Exit 7

Hours of Operation: 05: 53-22: 34 / 05: 52 - 22: 32

Boarding location: T1 4A,B boarding / T2 3rd floor,  
basement 1st floor

#### <Gimpo Airport>

Fares: Adults 7,000 won to 5,000 won / Children:  
5,000 won to 4,000 won

Dispatch interval: 40-50 minutes

1. Samseong Station Exit 5 → Gimpo Airport

Hours of Operation: 05: 08 - 23: 40

2. Gimpo Airport → Samseong Station Exit 5

Hours of Operation: 04: 30 - 23: 00

#### Parking Information

If you use the hotel restaurant, bar or  
other related facilities, you can park at the  
hotel for free for up to 2 hours. For  
parking management reasons, 5,000  
won valet parking is required.

